

PREVIEW

# David Levy & A

2022

TEFAF MAASTRICHT

Booth 423

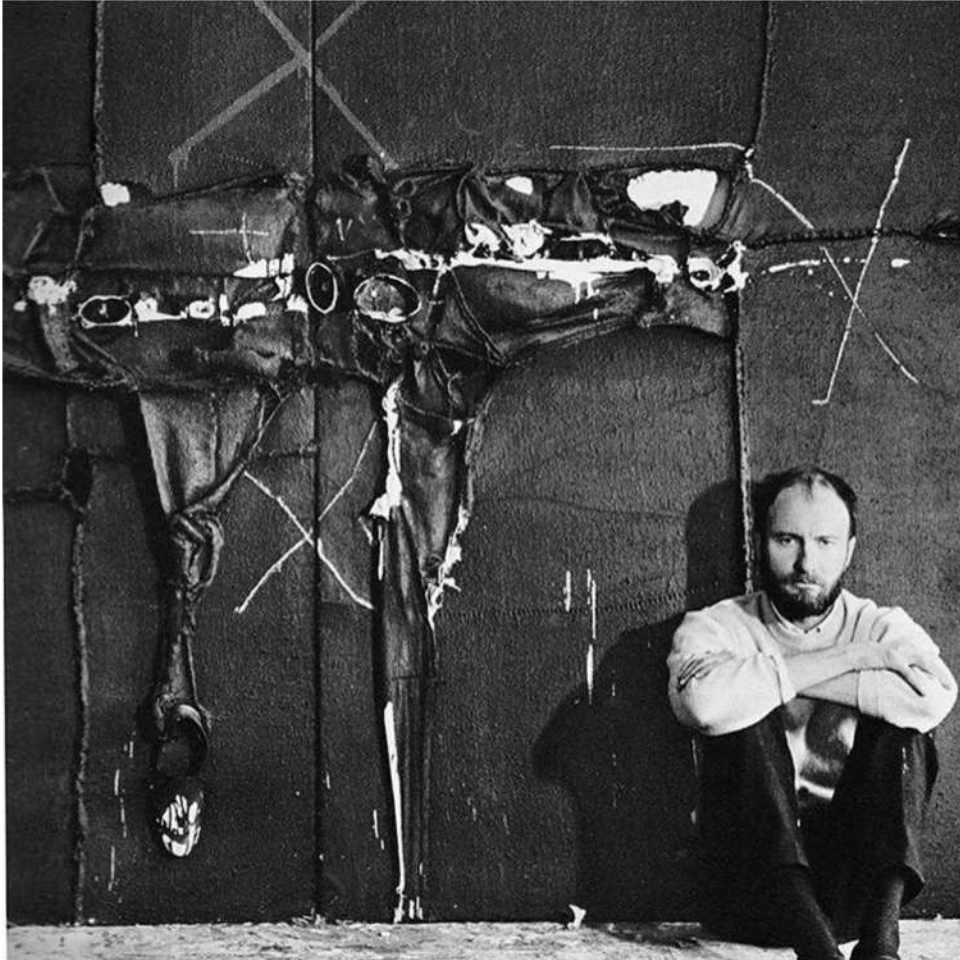


Lucio FONTANA, 1899 - 1968  
*Concetto spaziale, Attese 1967*

Waterpaint on canvas

Signed, titled and inscribed: *l. Fontana "Concetto Spaziale" ATTESE Nel 1906 quando arrivai a Milano c'erani i tram a cavalli (on the reverse)*

36.6 x 28.9 in (93.2 x 73.5cm)



*"I am not afraid to say that much of what I do escapes my understanding.*

*I go about my work with total freedom, in a deliciously strange, disconcerting world; I make different textures collide; I populate the infinite spaces and torture them with a dynamic entanglement of strings." - Millares [1]*

[1] MILLARES, Manolo. 'El arte -hoy- bordea ya esa línea divisoria con lo imposible'. Cuatro pintores españoles. Madrid: El Paso, March 1958.





Manolo MILLARES, 1926 - 1972

*Cuadro 121, 1960*

Mixed media on burlap

Signed lower right Millares and signed, dated and titled on the stretcher: *Millares – Cuadro121 (1960)*

51.1 x 63.7 in (130 x 162.3 cm)



Josef Albers, 1888 - 1976

*Homage to the Square: Towards Fall I, 1958*

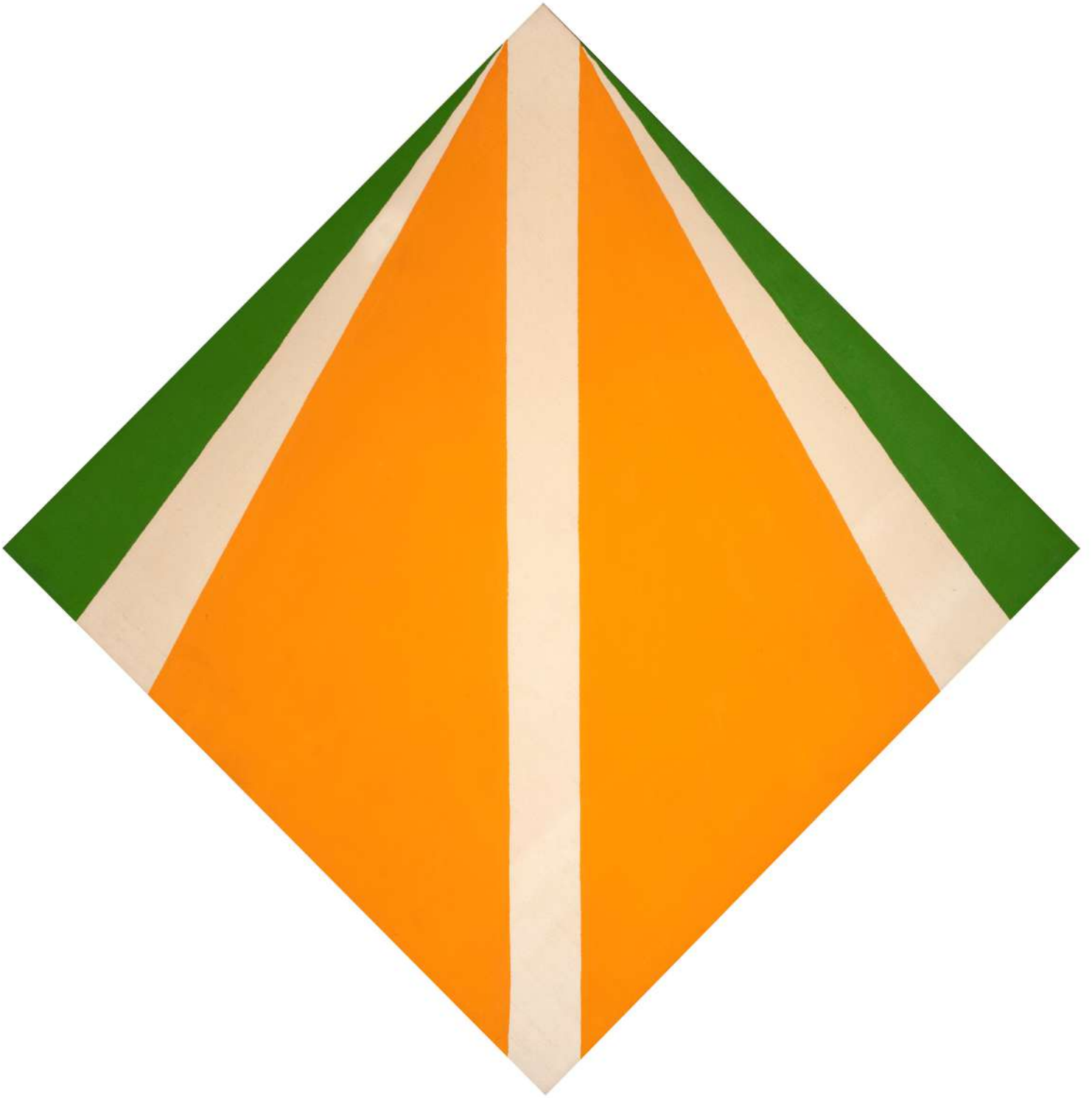
Oil on Masonite

Signed with the artist's monogram and date "58" lower right; signed titled and date on the reverse and annotated for colors

23.8 x 23.8 in (60.5 x 60.5 cm)







Kenneth NOLAND, 1924 - 2010  
7, 1974

Acrylic on canvas

Signed, titled and dated on the reverse: *7 1964 Kenneth Noland*  
63.7 x 62.9 in (162 x 160 cm) Diamond shape







BALTHUS, 1908 - 2001

*Nu étendu (Portrait of Setsuko, the artist's wife), 1969*

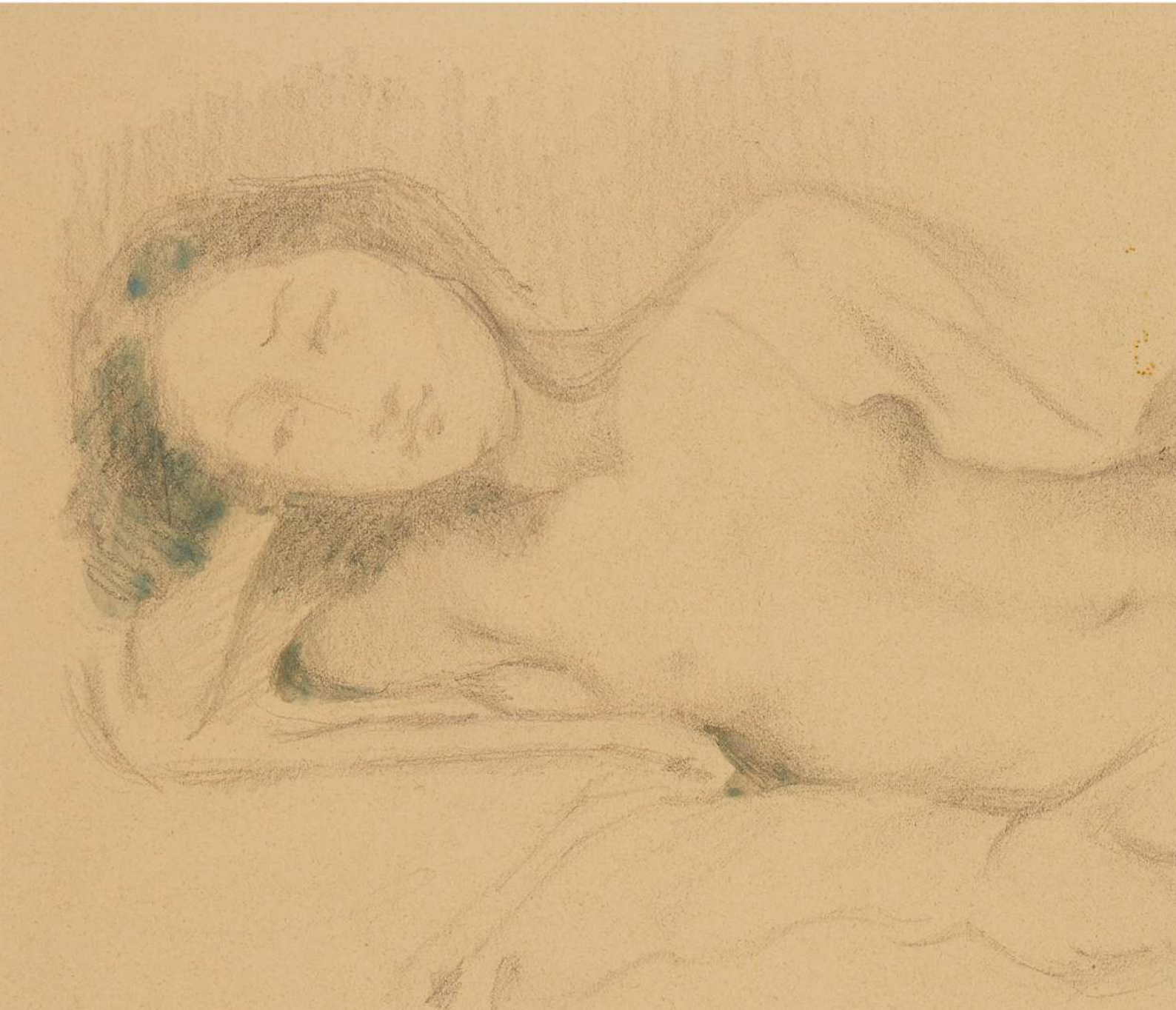
Pencil and watercolor on paper

Signed and dated lower left: *Balthus 1969*

11.8 x 15.9 in (30 x 40.4 cm)

*"What mattered was to believe in myself, and bring to light what was obscure stammering and trembling." - Balthus [2]*

[2] Brink, Andrew. *Desire and Avoidance in Art : Pablo Picasso, Hans Bellmer, Balthus and Joseph Cornell : Psychobiographical Studies with Attachment Theory*. New York, Peter Lang, 2007.







Paul DELVAUX, 1897 - 1994  
*Bacchanale or La Statue*, 1967

Watercolor and India ink wash on paper  
Signed and dated lower right: *P.Delvaux 2-67*  
27.9 x 41.7 in (71 x 106 cm)

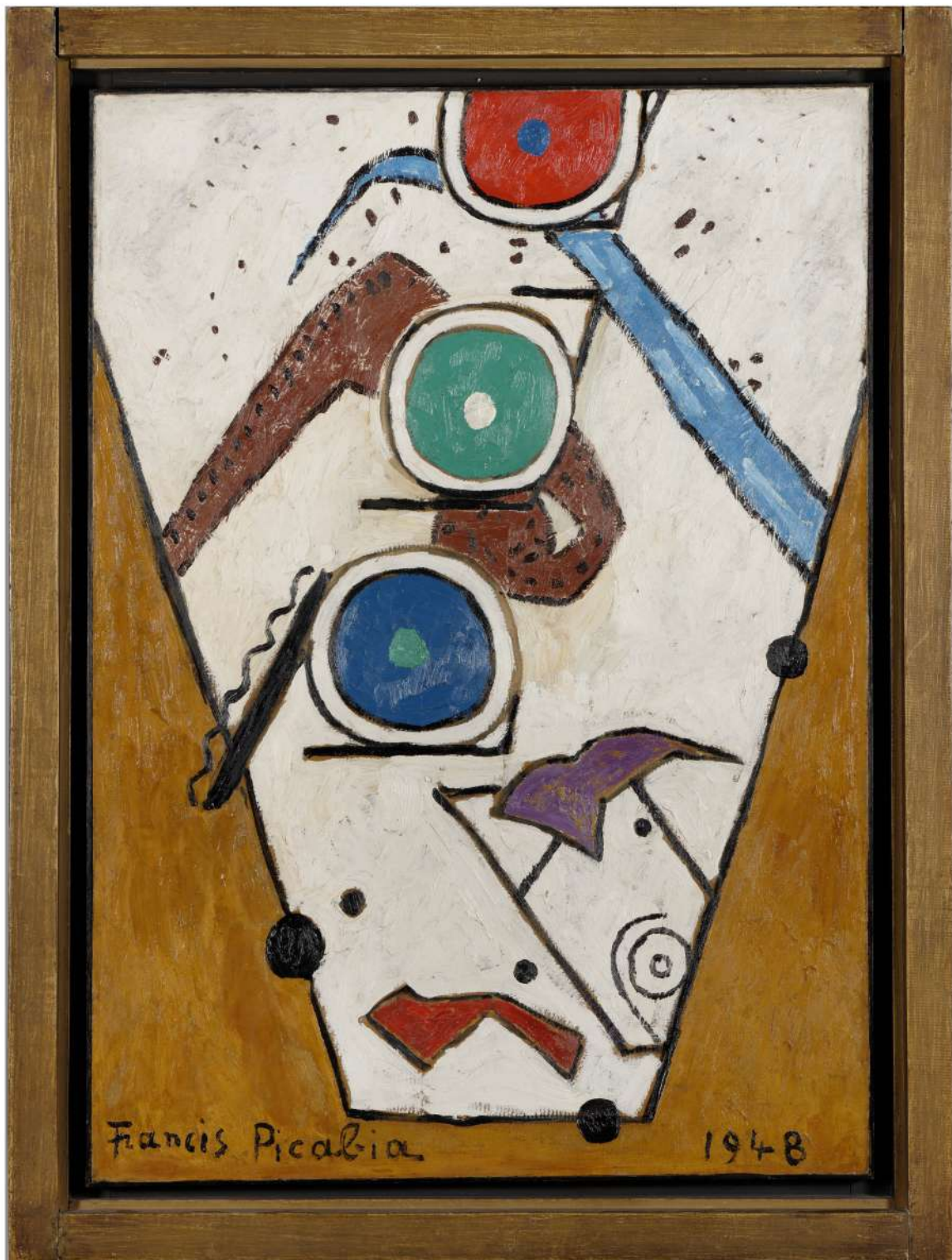




Henry MOORE, 1898 - 1986  
*Reclining Figures, 1942*

Pencil, wax crayon, watercolor wash, pen  
Signed and dated lower right: Moore '42'  
7.2 x 10 in (18.4 x 25.4 cm)





Francis PICABIA, 1879 - 1953  
*Untitled (La Magie du hasard)*, 1948

Oil on cardboard mounted on panel  
Signed lower left: *Francis Picabia* and dated lower right: 1948  
41 x 29 in (104.5 x 74.5 cm)





Francis Picabia

1948





Front

Simon HANTAÏ, 1922 - 2008  
*Blancs*, 1973

Oil on canvas, double sided  
Signed and dated lower right: S.H, 73  
61.4 x 54.7 in (156 x 139 cm)





Back





Jean Paul RIOPELLE, 1923 - 2002  
*Untitled, 1958*

Oil on canvas  
Signed and dated lower right: *Riopelle 58*  
28.7 x 36.2 in (73 x 92 cm)







Sergio CAMARGO, 1930 - 1990  
*Untitled, 1968*

Painted wood

Signed and dated 1968 and inscribed *Relief 205 Paris* on the back  
12.2 x 12.2 x 3.14 in (31 x 31 x 8 cm)

## Provenance

### **Lucio FONTANA, *Concetto Spaziale, Attese***

E. Muggia Collection, Milan

Anon. sale, Sotheby's London, 9 December 1999, lot 34

Private Collection, Italy

Private collection Christie's London: Tuesday, June 30, 2015, Post-War and Contemporary Art Evening Auction, Lot 21

Private collection, Monaco

### **Manolo MILLARES, *Cuadro 121***

Galerie Daniel Cordier, Paris

Galleria Odyssia, Roma

Betty Estevez collection, Paris

Private collection, Basel

Sotheby's London, 5 April 1990, lot 629

Champin-Lombrail-Gautier, Enghien-les-Bains, 19 June 1991, lot 29

Private collection, Germany

Christie's London, 6 February 2002, lot 24

Private collection, London

### **Josef ALBERS, *Towards Fall I***

The Greenberg Gallery, St. Louis

Galerie Beyeler, Basel (#7609)

Christie's London, 27 June 1991, lot 30

Art & Public, Geneva

Sotheby's London, 27 June 1999, lot 157

Private collection, London

Christie's London, 9 February 2007, lot 222

Private collection, Switzerland

### **Kenneth NOLAND, *7***

Lawrence Rubin Gallery, New York

Galerie Lawrence, Paris

Kasmin Limited, London

Private Collection, New York

The Department of Art, Brown University, Providence, Rhode Island

Christie's, New York, November 12, 1980, lot 55

HSBC Corporate Art Collection

Sotheby's New York, 11 May, 2005, lot 173

Private collection, France

### **BALTHUS, *Nue étendu (Portrait of Setsuko, the artist's wife)***

Private collection, Paris

### **Paul DELVAUX, *Bacchanale or La Statue***

Mrs. Jean Krebs Brussels

Galerie Isy Brachot Paris

Private Collection, Paris

### **Henry MOORE, *Reclining Figures***

Curt Valentin, New York (No. 7299)

M. Knoedler Gallery, New York

Private Collection, New York

### **Francis PICABIA, *untitled***

Galerie Charpentier, Paris

Vittorio Levi collection, Paris

Private collection, Paris (by descent)

Private collection, Paris

### **Simon HANTAI, *Blancs***

Galerie Jean Fournier, Paris

Private collection, Paris

Drouot Montaigne, Etude Briest, 7 June 2000, lot 56A.

Private collection, France

Artcurial, 3 July 2013, lot 32.

Private collection Paris

### **Jean Paul RIOPELLE, *untitled***

Paul Garson collection, Paris

Private collection, Paris, by descent

### **Sergio CAMARGO, *untitled***

Gimpel & Hanover Galerie, Zurich

Private collection, acquired directly from the previous owner in 1969

Then, by descent





Joan Mitchell and Jean-Paul Riopelle on rue Fremicourt, Paris 1963